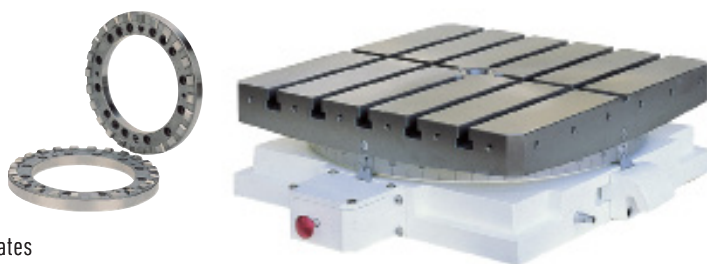


# Rotary tables

## Rotary table horizontal GCT

- suitable for high-precision machining such as boring, milling, grinding
- the integrated 2-part HIRT clutch ensures long-term trouble-free operation
- powerful clamping system enables heavy machining
- easy clamping with a pneumatic system
- the body of the device made of cast iron FC-35 ensures durability and eliminates



Parameters	Rotary table model							
	GCT-301	GCT-450	GCT-600	GCT-700	GCT-800	GCT-1000	GCT-1200	
Table size (mm)	300x300	450x450	600x600	700x700	800x800	1000x1000	1200x1200	
Height (mm)	140	170	200	220	280	300	340	
Spindle hole (mm)	ø25	ø30	ø40	ø40	ø60	ø60	ø80	
T-slot (mm)	14	18	20	20	22	22	22	
Table rotation direction	clockwise and counterclockwise							
Table and clamping lift (mm)	5	5	5	5	8	8	8	
Drive	Longitudinal		PNEU pressure 5-8 kg/cm <sup>2</sup>				Pneu. 5-8 kg/cm <sup>2</sup> Hydr. 30 kg/cm <sup>2</sup>	
	Rotary		Manual					
Number of divisions (evenly spaced)	15°			1° or 5°				
Max. theoretical load (kg)	1200	2400	3400	3400	4500	6000	7000	
Permissible load weight (kg)	500	1000	2000	2000	3000	5000	6000	
Clamping force (kg)	-	2200	3200	3200	5400	5400	8100	
Device weight (kg)	90	200	400	600	900	1200	2000	